



ProSpace

PROJECT MANAGEMENT



# **INTRODUCTION**

Prospace is a premier project management company specializing in interior fit-outs for commercial, residential, and hospitality spaces. With a dedication to excellence and a passion for design, we provide end-to-end project management services to transform your vision into reality seamlessly.

# **OUR MISSION**

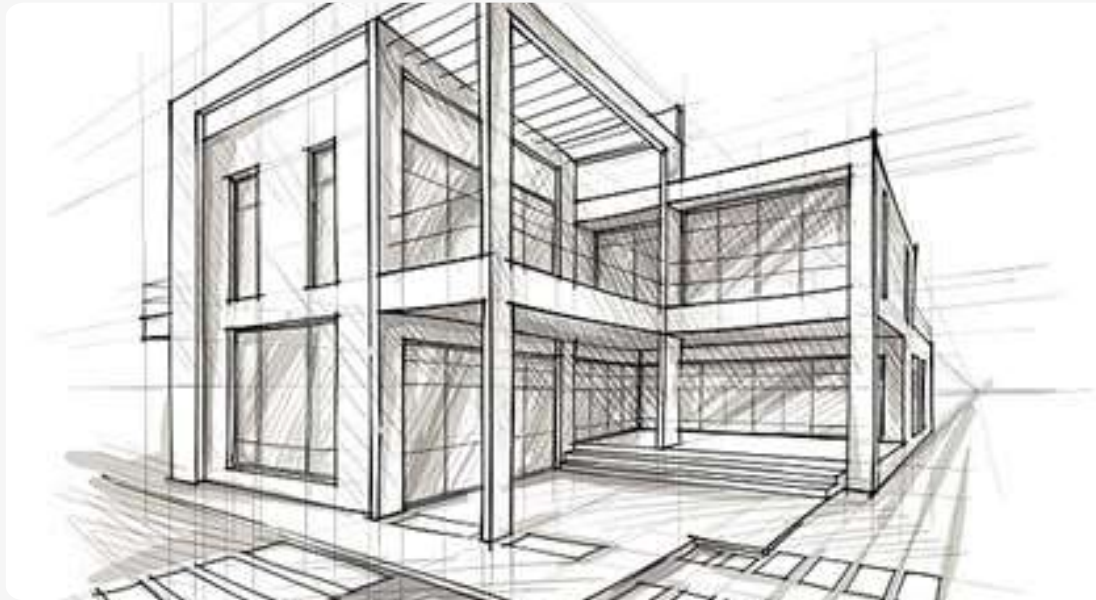
Our mission is to deliver exceptional interior fit-out solutions that exceed client expectations, combining innovative design, cost-effective strategies, and superior project management expertise.

# OUR SERVICES

# What WE DO



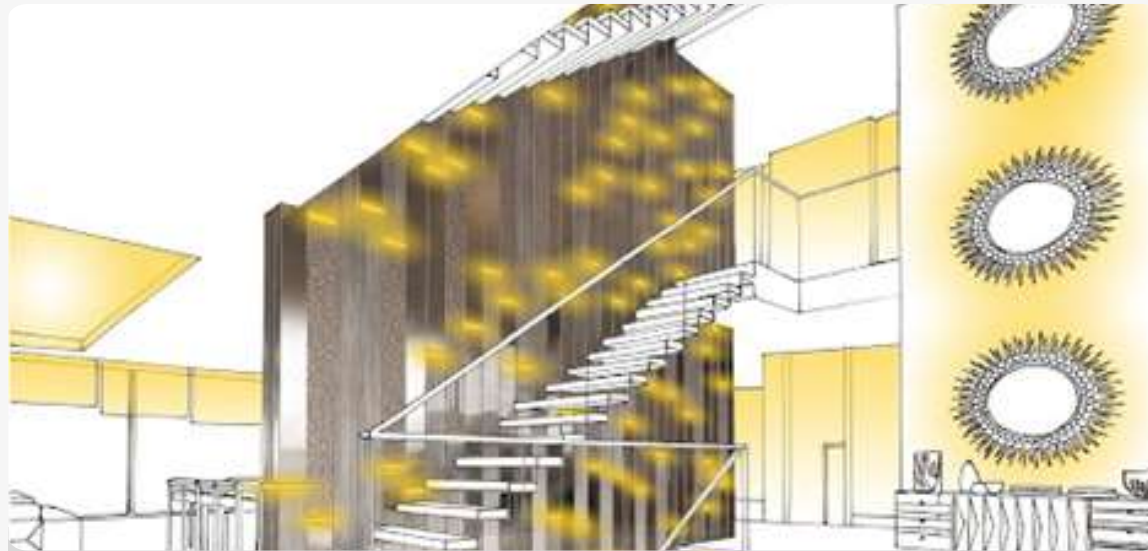
# Project Management



# Design



# Turnkey



MEP



# Landscaping



# OUR SERVICES

## What WE DO



- ▶▶ **Client-Centric Approach:** At Prospace, we prioritize understanding our clients' unique needs, preferences, and objectives. We collaborate closely with clients from the initial concept stage to project completion, ensuring their vision is realized while adhering to budget and timeline constraints.
- ▶▶ **Design Excellence:** Our team of talented designers brings creativity and expertise to every project, crafting bespoke interior designs that reflect clients' brand identity and aesthetic preferences. From conceptualization to detailed design development, we strive for excellence in every aspect of the design process.
- ▶▶ **Cost Management:** We understand the importance of cost-effective solutions without compromising quality. Our experienced project managers meticulously assess project requirements, develop comprehensive budgets, and implement cost-saving measures throughout the project lifecycle to ensure optimal financial efficiency.

# OUR SERVICES

## What WE DO



- ▶ **Material Selections:** With access to an extensive network of suppliers and vendors, we offer a wide range of high-quality materials, finishes, and furnishings to suit diverse design styles and budgets. Our experts assist clients in selecting the most suitable materials that align with their design vision and performance requirements.
- ▶ **Programme Budget:** We develop detailed project schedules and budgets tailored to meet clients' specific needs and objectives. Our transparent approach to programme budget management ensures that clients are informed every step of the way, with regular updates on project progress and expenditure.
- ▶ **Delivery of the Project:** Our commitment to excellence extends to the timely and successful delivery of every project. With a focus on efficient project execution, proactive problem-solving, and stringent quality control measures, we ensure that projects are completed to the highest standards, on schedule, and within budget.

# WHY CHOOSE PROSPACE?

## Innovative Design

We combine creativity, innovation, and practicality to deliver exceptional interior designs that inspire and enhance the user experience.

## Client Satisfaction

Client satisfaction is our top priority. We are dedicated to delivering personalized service, open communication, and superior results that exceed expectations.

## Expertise

Our team comprises seasoned professionals with extensive experience in interior design, project management, and construction.

## Cost-Effective Solutions

We leverage our industry expertise and supplier relationships to provide cost-effective solutions without compromising quality or design integrity.

## Turnkey Solutions

From concept to completion, we offer comprehensive turnkey solutions, streamlining the interior fit-out process and minimizing stress for our clients.



# Active Sectors



Residential



Food & Beverage



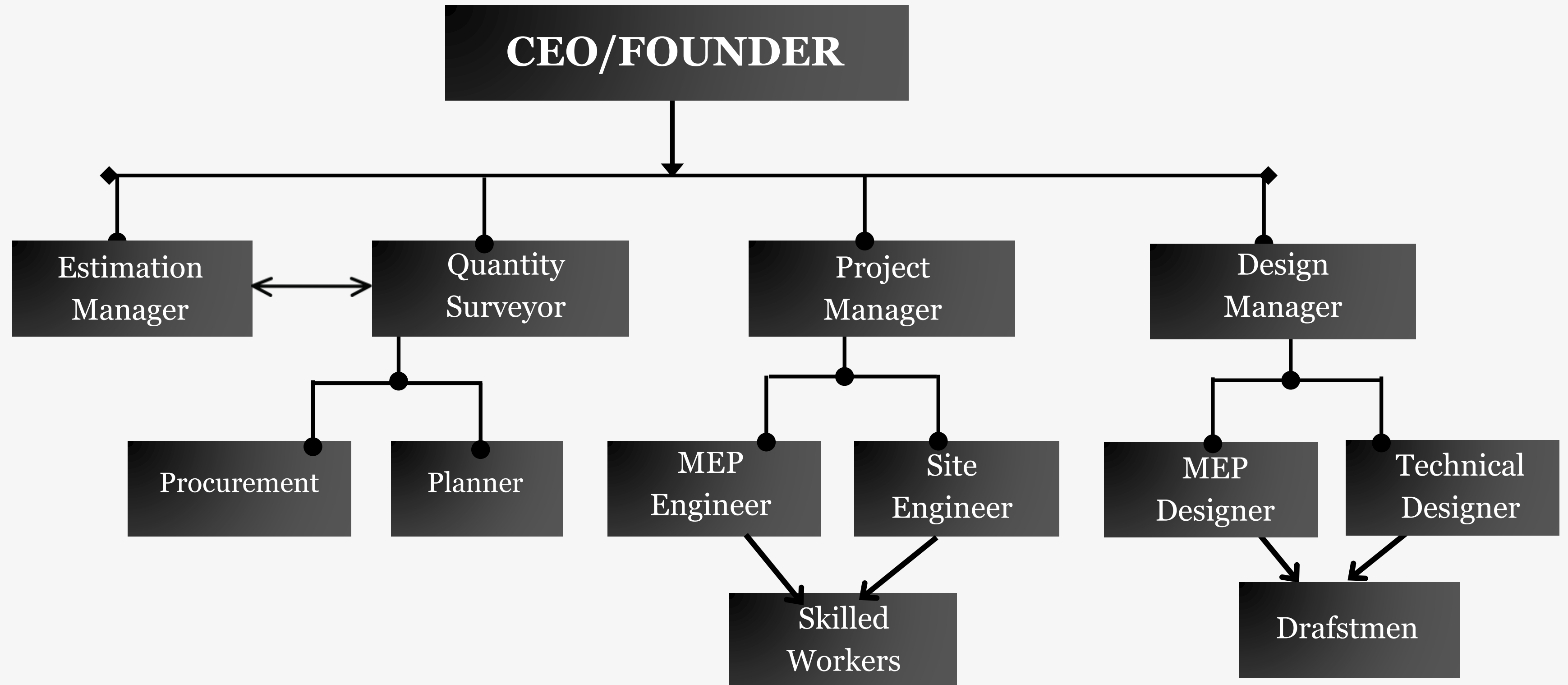
Commercial



Retail

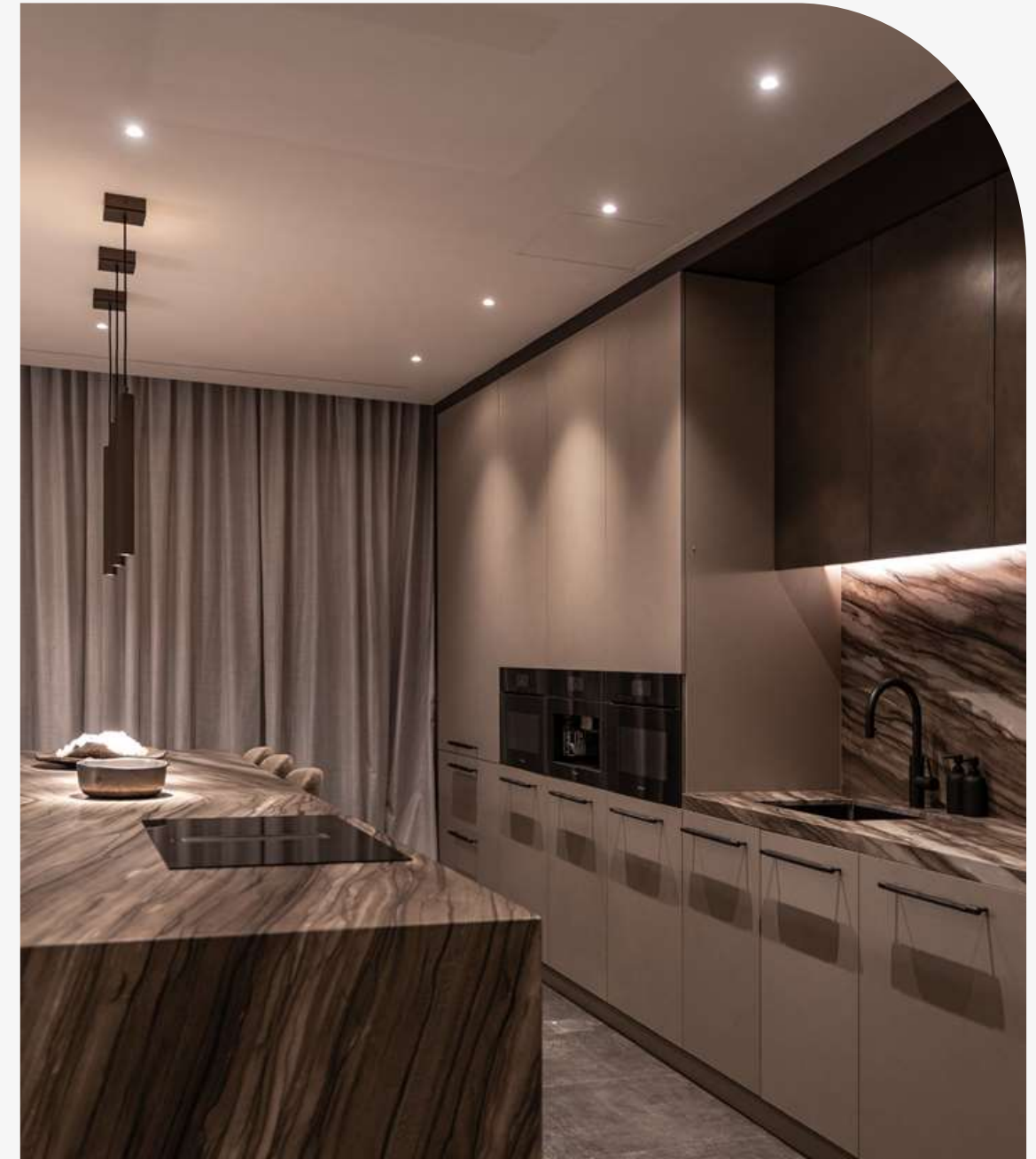


# ORGANIZATIONAL CHART



# Residential

## Private Villa – The Palm





# Residential

## Private Villa – District One





# Residential

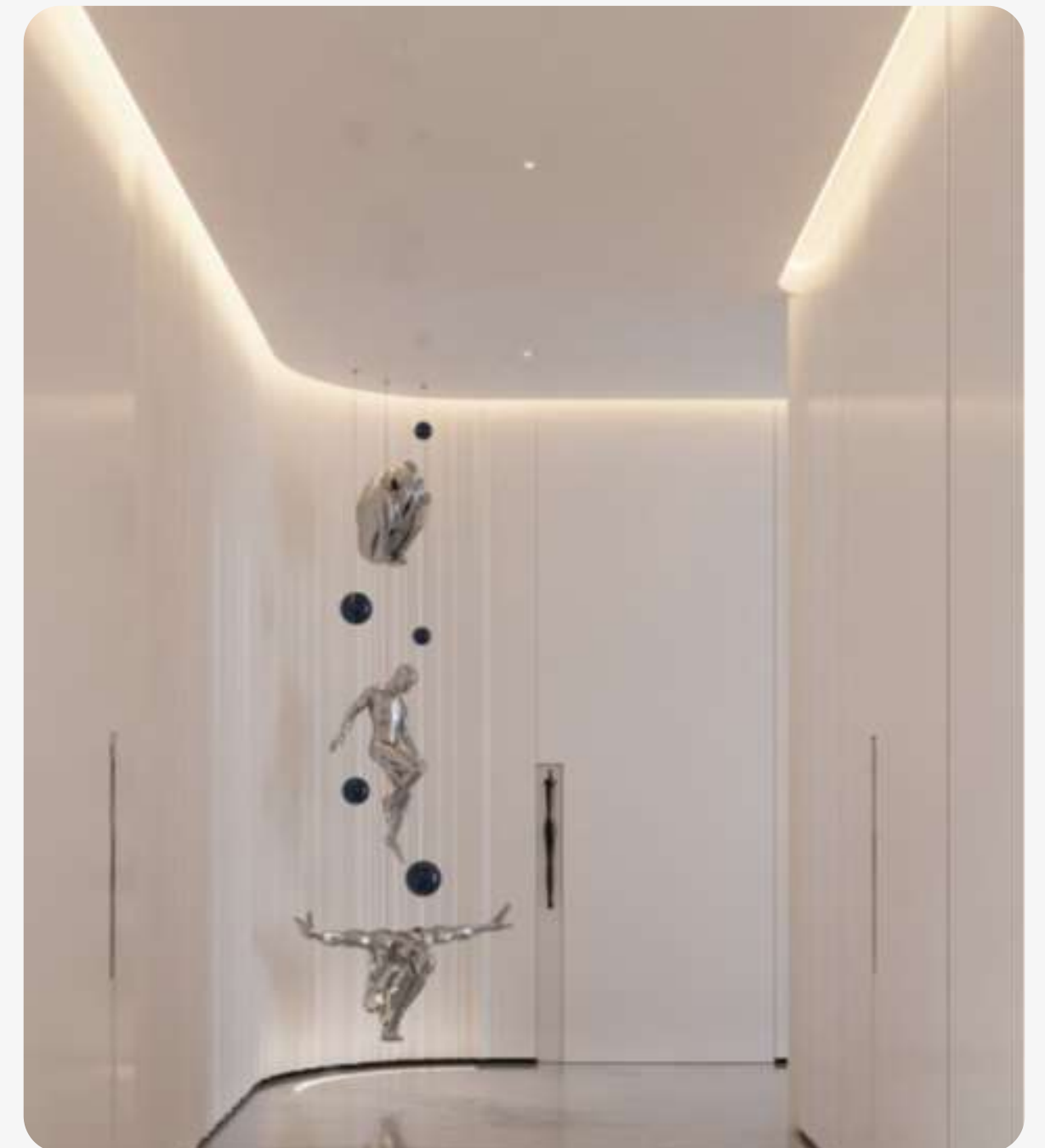
Jumeirah Golf Estates





# Residential

Jumeirah Islands





# Food & Beverage

Miya





# Commercial

Energi





# Commercial

Fiker Institute







## Office Address

Office 202, Saaha offices, C - Souk Al  
Bahar Bridge, Dubai, Po Box:282615



[info@prospacepm.com](mailto:info@prospacepm.com)



[+971585061227](tel:+971585061227)



[www.prospacepm.com](http://www.prospacepm.com)